

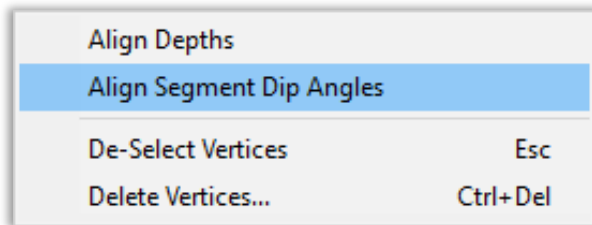
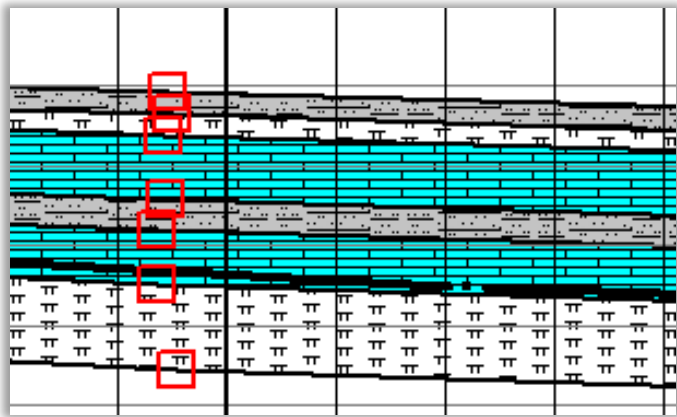


WellSight StarLog™ 8.8 What's New!

Lithology Boundary Fill (LBF) – HorizontalLog

Align Multiple Segments to the Same Dip Angle

To edit a segment in LBF, select the starting or **first vertex** of a segment and right click to **Align Segment Dip Angles** to align the segments to the **same dip angle**.



Note: This menu option is available when one vertex/segment per boundary is selected, and the vertices are within a reasonable distance of each other.

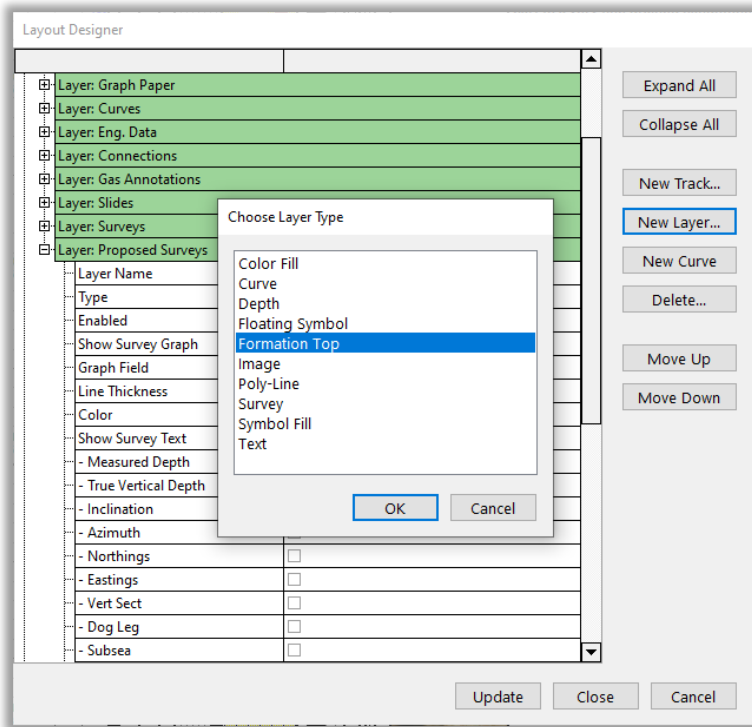
Formation Top Layer

Formation Top Layers are automatically added to **new default logs** and can be added to existing logs in **Layout Designer**.

Tops may be imported to the layers from **Excel**, **ODS** spreadsheets, or delimited **ASCII** files. **Prognosis** tops could be added as a separate layer.

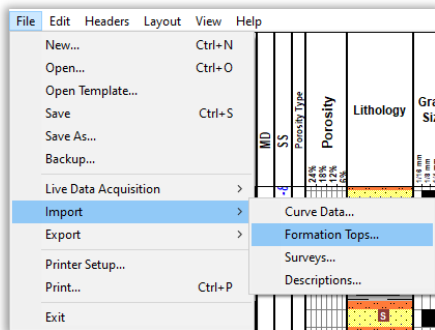
The Tops fields can include **Formation Name**, **TVD**, **Subsea** and **Remarks**.

To import tops into an existing **StripLog** file, click on **Layout > Layout Designer** select the **Track** to add the **Formation Tops** to, click **New Layer...** and choose **Formation Top** from the **Choose Layer Type** menu:

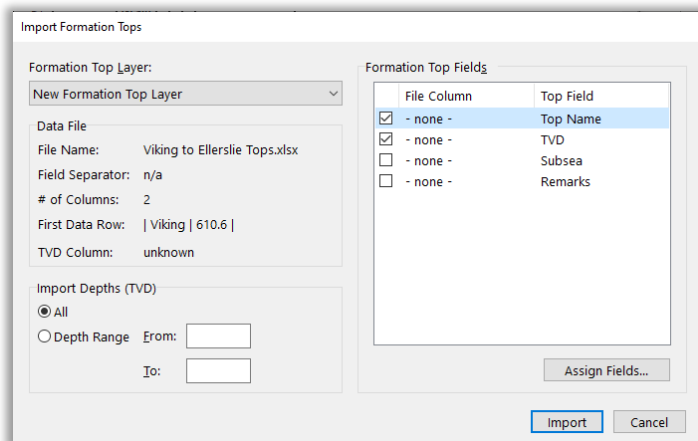


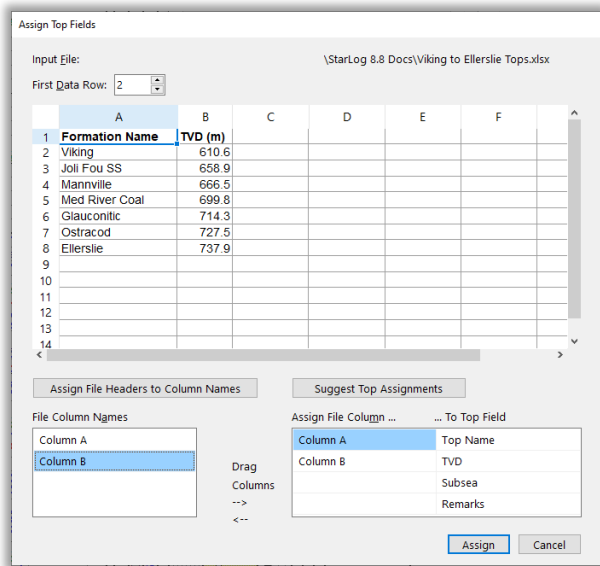
Change the **Layer Name** to your preference, such as **Tops** and change the **Color**, **Font**, and **Line** properties if desired. Click **Update** and **Close**.

File > Import > Formation Tops... and select the **Tops** file to import.

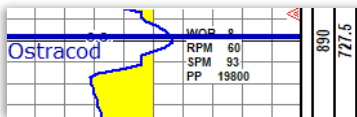


Select the **Depth Range** and the **Formation Tops Fields** to import (such as Top Name, TVD, etc.). Click on **Assign Fields...** to **Assign File Headers to Column Names**.

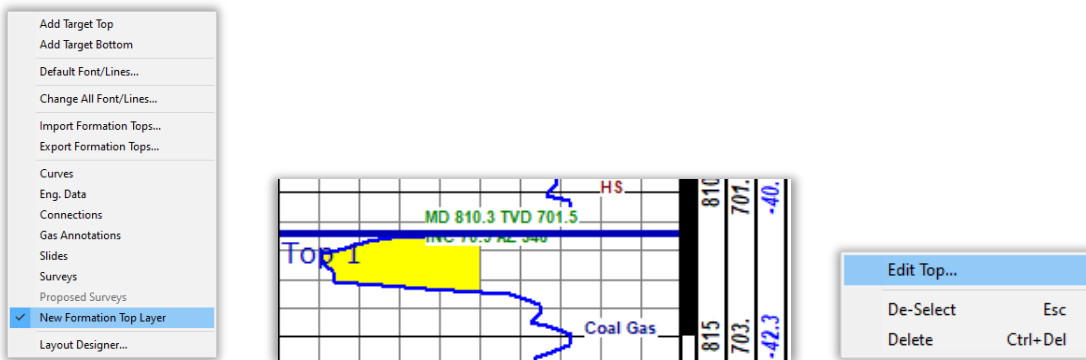




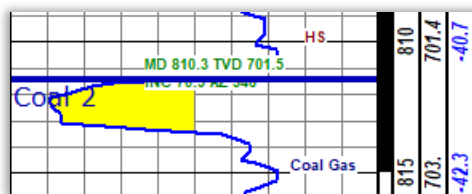
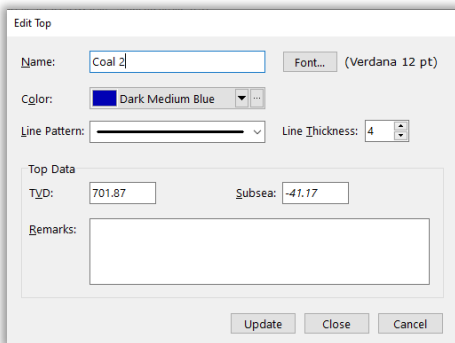
Click **Assign** to complete the task and click **Import** to bring in your formation tops. Once a layer has been added for tops, they are automatically displayed on the log.



To add a new **Formation Top** to an existing log, right click in the log and select **New Formation Top Layer** from the dialog box. Click at the desired depth on the log to pick your new Top.

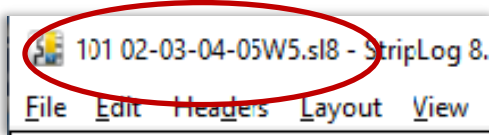


Right click and select **Edit Top...** to rename the top, change the **Font, Color, Line Pattern & Thickness** and add **Remarks**.



StarLog Taskbar

The **Taskbar** and **Main window title** now show the **File Name** before the program name.



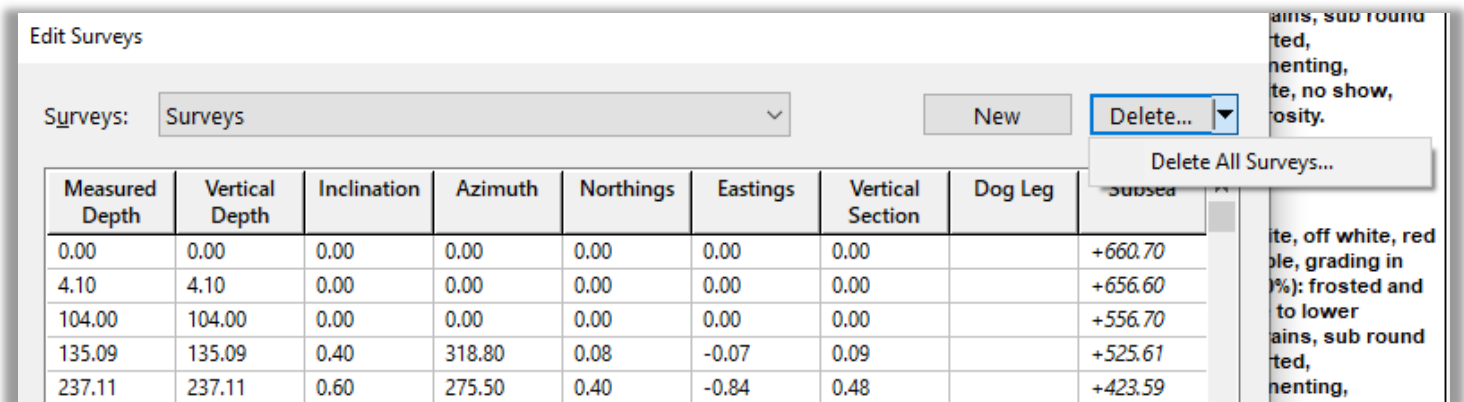
This is particularly useful when you have multiple instances of **StarLog** open and want to quickly switch between wells by scanning over the **Log File Names** in the **Taskbar**. See Image below.



Surveys – Clear all Surveys in a Layer

Edit > Edit Surveys, click the down arrow in the **Delete...** drop down list and select **Delete All Surveys...**

You can easily delete all surveys if, for example, you are drilling horizontal wells from the same pad and starting a new leg using a log from a previous leg.

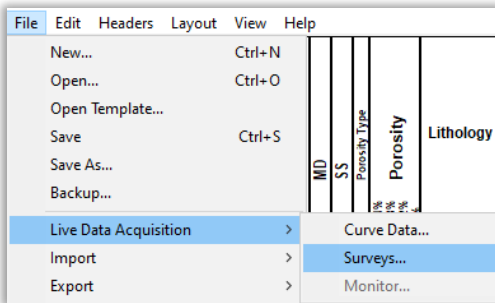


LDA for Surveys

You can use **LDA to import Surveys** which works the same way as Curve Data.

File > Live Data Acquisition > Surveys... to import an LAS or delimited ASCII file. Columns in the input data file are mapped to survey fields the same as when importing surveys all at once.

At each **LDA** update interval, **StarLog** reads the entire input file and replaces the current data with the new data. The update interval is within 1-60 minutes.



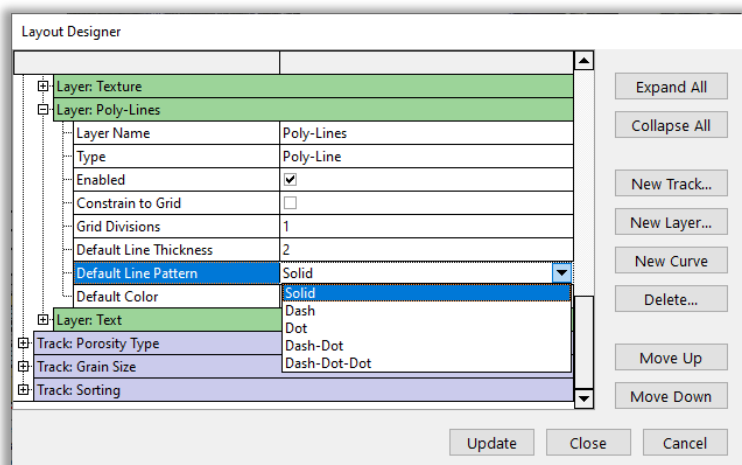
Note: **LDA** is not a real-time system and is not intended for monitoring the EDR system (e.g. gas detector), drilling progress, or any other metric in real-time.

LDA complements a WITS / WITSML system that is configured to save a data/survey file to a user specified folder and filename. **LDA** auto-imports those files into the log at user specified time intervals.

WellSight will be releasing a WITSML utility program in the near future.

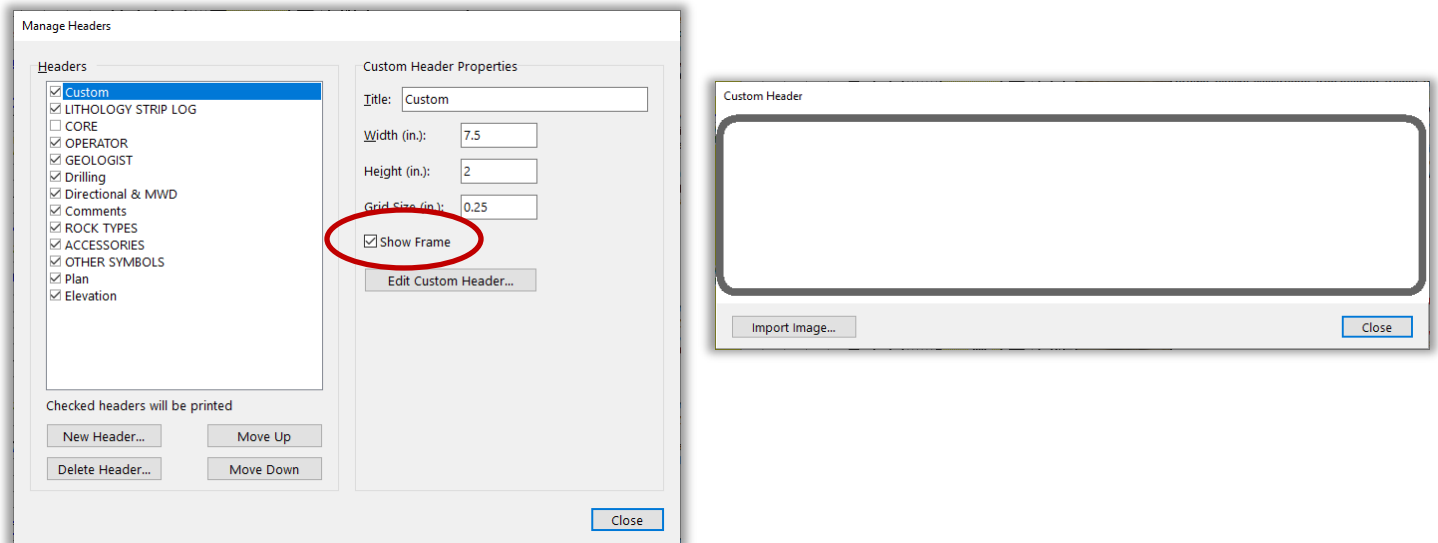
Poly-lines & Pointer Lines

Added the ability to **change** the **line properties** for **Poly-lines** and **Pointer lines** for both the Layer and individual Lines.



Optional Custom Header Frame

In **Headers > Custom Header...** the default is now no frame. If you'd like to have a frame around the header, check the **Show Frame** box in **Manage Headers**.



Autosave and Backup Log Files

File filter options were added to easily find **StarLog's Autosave** and **Backup** files.

Note: Remember to save the log file with the proper filename if keeping this version as the working copy.

