

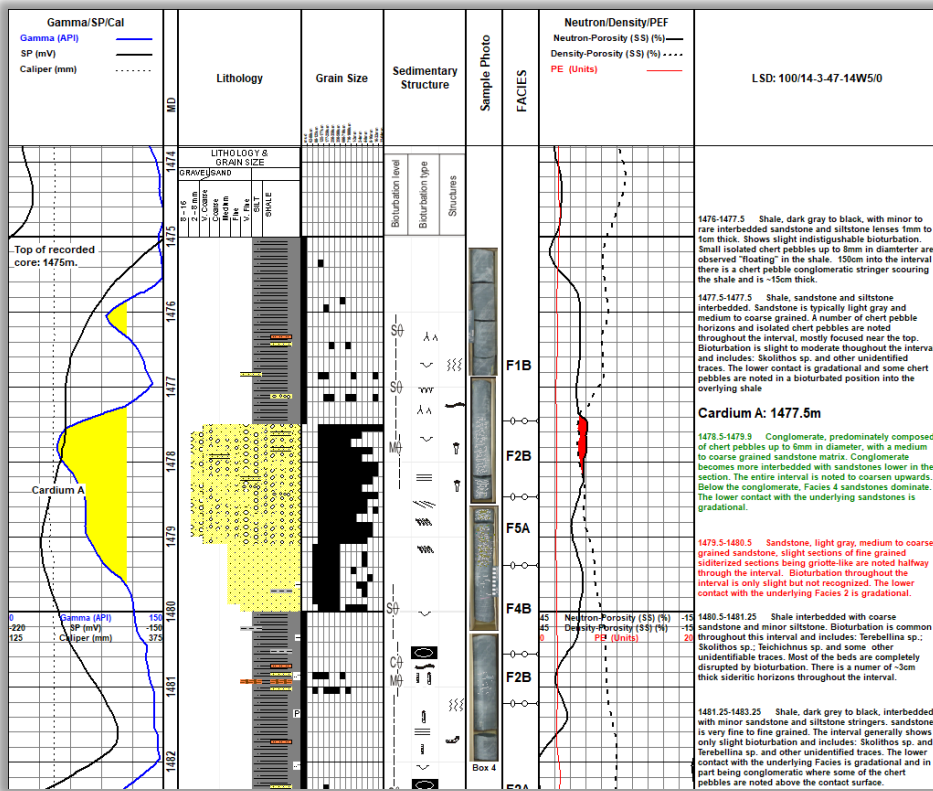


WellSight StarLog™ 8.5

What's New!

Text Formatting

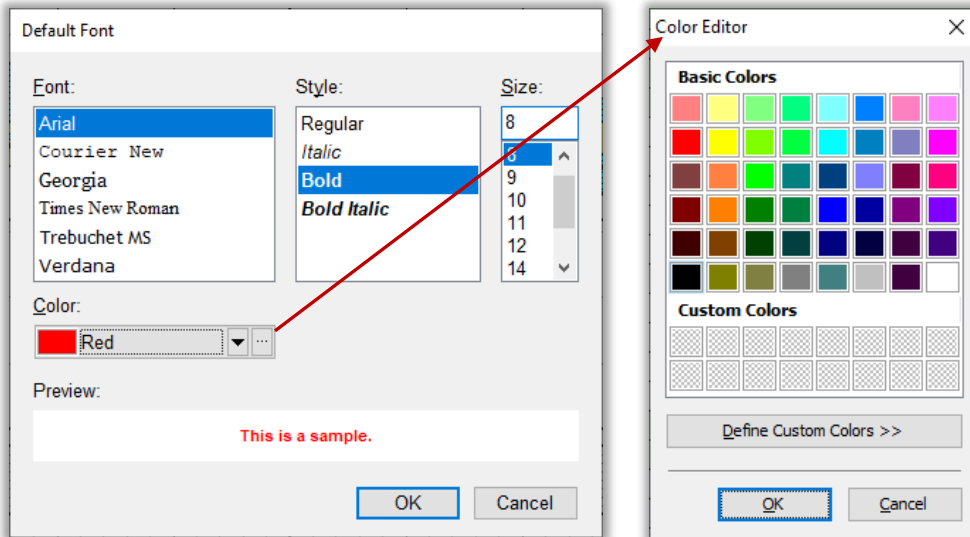
Text Formatting Properties allow you to change **Text Font, Style, Size and Color** in Geological Descriptions and other text layers.



In **Layout > Layout Designer**, click **[+]** to open **Layer: Geological Descriptions > Default Font > Arial 8 pt. Bold** and select **Font...** to open the **Default Font** dialog.

Layer: Geol. Descrs.	
Layer Name	Geol. Descrs.
Type	Text
Enabled	<input checked="" type="checkbox"/>
Constrain to Grid	<input type="checkbox"/>
Grid Divisions	1
Default Font	Arial 8 pt Bold Font...

Click **[...]** to open the **Color Editor** to define a Custom Color.



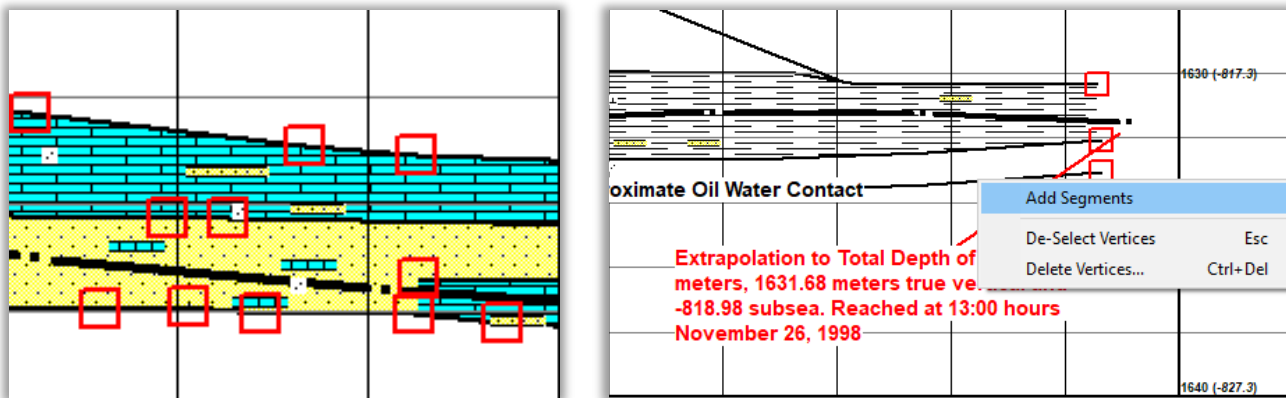
You can change Font properties for an existing block of text by selecting a text block, Right click and select **Font...** to open the **Font** dialog box.

Lithology Boundary Fill – HorizontalLog

Select Multiple Vertices

You can select multiple vertices to quickly draw your lithology. Drag the mouse around the area you desire which creates a selection box. All vertices in the selection box are high-lighted red. Right click on a vertex and you can **Add Segments**, **De-Select** or **Delete Vertices**.

Select multiple end vertices and Right click to quickly **Add Segments** to multiple boundaries to easily extend your lithology. To de-select the vertices click the **ESC** key or **CTRL + DEL** key to delete.



Multiple Core Headers

A log file can now have multiple **Core Headers** which can be exported and printed.

Improved Data Curve Crossover

New **Layout Designer Threshold Conditions** have been added “**when right of**” and “**when left of**” which provides greater flexibility to color fill when 2 curves have different scales and data steps.

Note: These replace “when greater than” and “when less than”.

Added Shades of Common Colors to the Layout Designer

Five shades of red and green have been added to the end of the **Layout Designer** color palette to enhance your log presentations.

Note: Some color names have been changed to provide clarity with the added shades.

