



WellSight StarLog™ 8.4

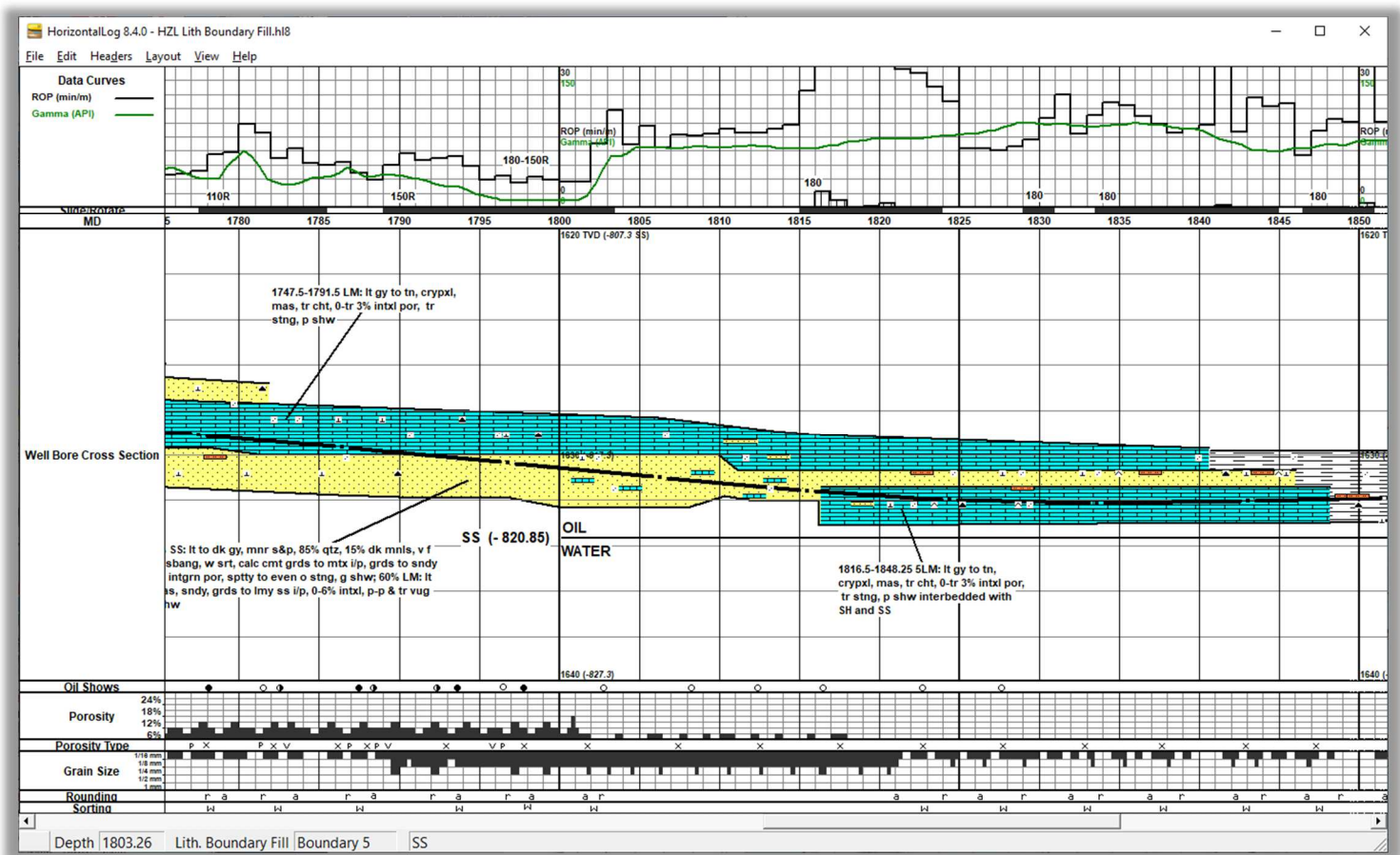
What's New!

Lithology Boundary Fill – HorizontalLog

HorizontalLog has an optional method to fill lithology between special poly-line boundaries.

Lithology Boundary Fill (LBF) Benefits:

- Automatic
- Quick to draw and change
- Smooth dip angle boundaries



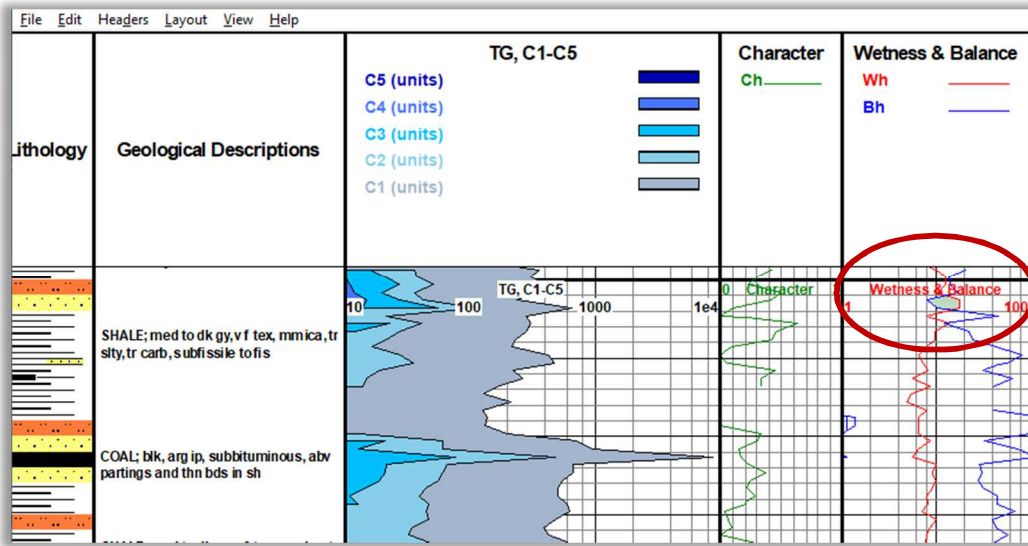
Gas Ratio Curves

Gas Ratios can be calculated automatically and dynamically from the C1 – C4/C5 curves such as **Wetness & Balance** (Red & Blue curves) and **Character** (Green curve) as shown in the figure below.

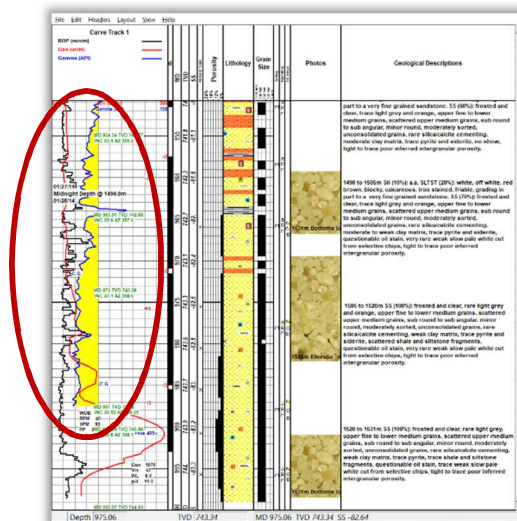
Data Curves – Selective Fill

There are two new ways in which you can **selectively fill** parts of **Data Curves**.

- Fill the area between two data curves to highlight **cross-overs** or,
- Use a constant-value threshold fill to highlight areas of interest or a **cut-off**



The image above shows where Wetness & Balance curves cross over in the Track to the right.



The image above shows the constant-value fill applied to a cut-off for the Gamma Ray curve (yellow).