



WellSight StarLog 8

Getting Started

WellSight Systems Inc. offers 3 standalone products StripLog, MudLog and HorizontalLog for creating, viewing, editing, printing, and exporting vertical and horizontal WellSight log files.

The StarLog Suite consists of: StripLog 8 and MudLog 8 – vertical log formats (purchase one license for both programs). HorizontalLog 8 – horizontal log format (license sold separately).

	<p>Features:</p> <ul style="list-style-type: none">• Create a new log file.• Edit any previous version WellSight log file (Note: This will update the data format to the latest version).• Print any log file created by WellSight - Maximum printing page length of 52 inches (Windows limitation).• Select a scale to view and print the log files.• (Automatically) import and plot data curves and survey files.• Export data curves and survey data files in LAS formats.• Create high resolution images of the logs in common image formats.• Change data curve scales within the log file.

Download StarLog Suite

Download the StarLog suite of products installation file from the website: <http://wellsight.com/our-products/>. Select which version of the suite you wish to install (3 different versions are available). Products are downloaded and installed together unless custom setup is chosen, which we don't often recommend.



Download Page – Customer Information Webpage

WellSight requires that customers who download the installation file provide their basic information for verification:

- Name, Company, Phone Number, E-mail Address and Windows version.

Once your information is entered, click on the Download button.



Run or Save Download file Option



We recommend that you **Save** the installation file and then copy it to each computer that will be running WellSight programs.

- The installation file is over 80 MB in size and that may cause major delays when trying to Run the installation over a slow internet connection.

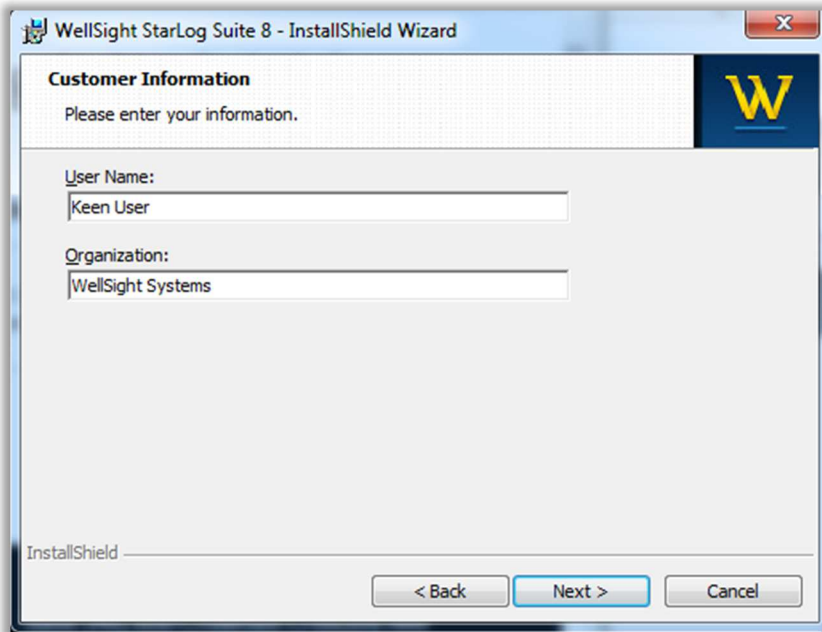


Installing StarLog

Locate and run the downloaded setup program, e.g. StarLog_820.exe, and double-click it to start the installation.

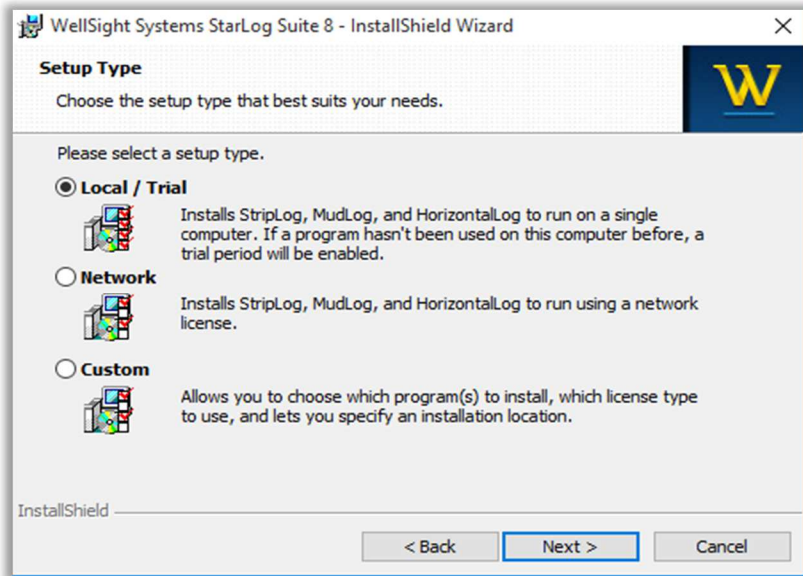
Customer Information

Enter a Name and Organization (optional).

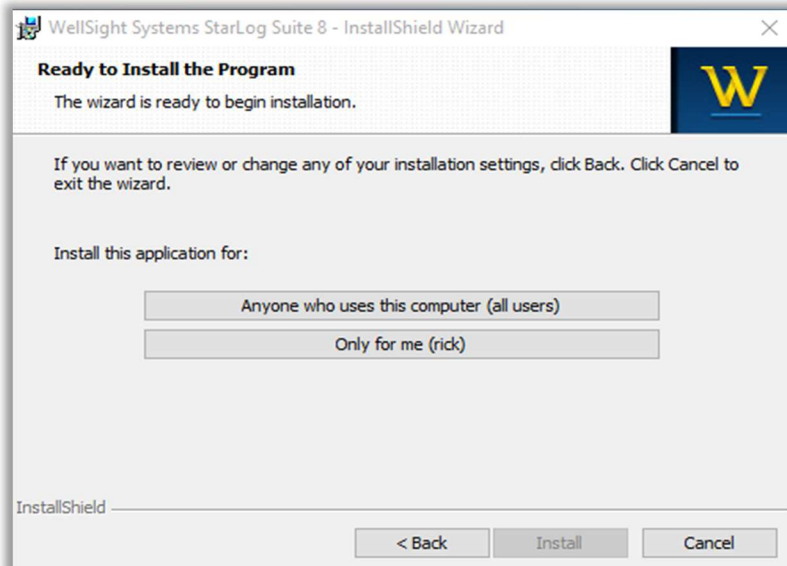


Installation Type Options

- **Local/Trial** – install for all individual computers.
- **Network** – install only on network license servers or network clients.
- **Custom** – select only if required.

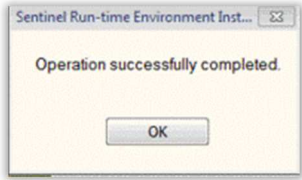


Ready to Install the Program



Select: **Anyone who uses this computer** or **Only for me** option which is used when there is more than one user on the same computer.




Operation Successful



Click **OK**.

If an error occurs, take a screen capture of the error and fill out a PRF (Problem Report Form found at www.wellsight.com/support/) and submit to WellSight or call the office at 1-800-447-1534 for assistance.

Other WellSight Products

<p>LogViewer 8</p> 	<p>Features:</p> <ul style="list-style-type: none"> • View any version of log file created by WellSight (including version installed and prior). • Print any log file created by WellSight – Maximum printing page length of 52 inches (Windows limitation).
<p>LogManager 8</p> 	<p>Features:</p> <ul style="list-style-type: none"> • View any version of log file created by WellSight. • Print any log file created by WellSight – Maximum printing page length of 52 inches (Windows limitation). • Plot a log file on an HP compatible plotter (no limits on length of page). • Select or Change the depth scale to view and print the log files. • Export data curves and survey data files in LAS formats. • Create high resolution images of the logs in common image formats. • Search for logs using information in the headers.
<p>Perspective</p> 	<p>Features:</p> <ul style="list-style-type: none"> • WellSight Perspective is a project planning, data recording, and geo-steering tool that brings together data for multiple wells and surrounding features, enabling you to visualize your entire project and all of its relevant data, both as a true 3D scene and using conventional 2D views.